

Coastal Prairie Conservancy



2023 STATE OF THE PRAIRIE



IT'S NOT JUST ABOUT PRESERVING LAND, IT'S ABOUT SECURING A LEGACY THAT BELONGS TO US ALL. TOGETHER, WE'RE CREATING SOMETHING LASTING - A PRAIRIE THAT IS HERE FOR EVERYONE.

- MARY ANNE PIACENTINI, PRESIDENT AND CHIEF EXECUTIVE OFFICER

LAND CONSERVATION



Land Conservation



EXPANDED THE KATY PRAIRIE PRESERVE

with the acquisition of 160 acres of coastal prairie immediately adjacent to already protected lands. This preserve on the historic Katy Prairie encompasses 19,000 acres and provides homes for plants and animals and recreation for people.



CONSERVED 145 ACRES IN JACKSON COUNTY

thanks to the generous donation of a private landowner. This property is a mix of open grassland, bottomland palmetto woodland, and wetlands - all rich with wildlife.



NATURE'S BURIAL SITE SELECTED

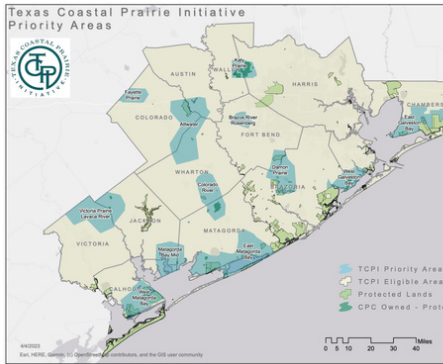
and work began to open a conservation cemetery in 2024. This nature sanctuary will preserve and restore coastal prairie and in so doing, celebrate life in a meaningful and lasting way. The site will provide additional access to visitors as well.



PROTECTED AND ENHANCED CONSERVATION VALUES

of preserved lands and developed advocacy efforts to support healthy watersheds.

Land Conservation



ADVANCED REGIONAL CONSERVATION

through the Texas Coastal Prairie Initiative's revision of strategic priority areas, conservation planning assistance to landowners, multiple webinars, a Restoration Roundup event, and baseline monitoring to document grassland bird populations.



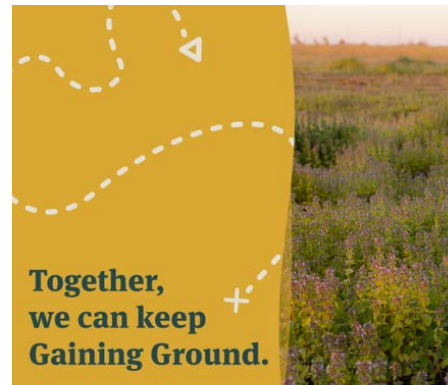
CONSERVED 238 ACRES IN MATAGORDA COUNTY

thanks to the generous donation of private landowners. Permanent preservation of these properties will further enlarge adjacent, protected areas, increasing the presence of crucial habitat types in this region.

Ashley Ubenhagen

WELCOMED DANIEL THORPE

as a Conservation Associate to the CPC team. He comes to us from the University of California, Berkeley where he received a Bachelor of Science in Society & Environment with a concentration on Justice & Sustainability.



COLLABORATED ON GAINING GROUND

campaign from the Land Trust Alliance along with four other Houston conservation organizations. The campaign aims to encourage people to get outside, volunteer, vote, and donate in support of conservation.

LAND STEWARDSHIP



Land Stewardship: Indiangrass Preserve



ENSURED NATIVE PLANTS WILL THRIVE

by performing a 150-acre prescribed burn, followed by weekly plantings of native forbs and grasses to support continued prairie restoration efforts.



MONITORED BIRD ACTIVITY

through the annual Christmas Bird Count, a volunteer-led stewardship activity. Local and visiting birders also added Katy Prairie Preserve bird sightings to eBird, advancing science and conservation.



SAFEGUARDED BIODIVERSITY

with the expansion of the native seed nursery operations, growing out over 2,000 plants to the 1-gallon size, doubling the number of plants grown last year.



PERFORMED WEEKLY NATIVE PLANTINGS

across the Indiangrass Preserve. One newly restored area is being monitored for invasive species and secured from cattle so that native plants can flourish.

Land Stewardship: Jack Road South Preserve



PRIORITIZED THE LONG-TERM CARE OF THE LAND

with the creation of a four-year management plan which emphasizes invasive species management and wildlife habitat.



PROVIDED HOMES FOR WILDLIFE

and allowed native plants to thrive with the clearing of 60 acres of invasive species.



TENDED TO AREAS ALONG PRESERVE STREAMS

by installing fencing that keeps cattle out and helps improve water quality.



PROTECTED WATER QUALITY AND QUANTITY

with the preparation of a water development plan that will be implemented at the Jack Road South Preserve in 2024.

Land Stewardship: Nelson Farms



PLANTED NATIVE SPECIES

on 100 acres of this tract, followed by a prescribed burn and invasives management on an adjacent portion to safeguard biodiversity and improve habitat.



ENHANCED SUSTAINABLE GRAZING

as well as grassland restoration and stream corridor protection by replacing fences and clearing fence lines on approximately half of the south fence line of the property.



UTILIZED DRONE TECHNOLOGY

with remote herbicide spray capabilities to manage nonnative plants on Nelson Farms as CPC adopts new technologies that make our land management practices more efficient and effective.



WORK ON VISITOR IMPROVEMENTS

began to build a new boardwalk, bridge, and wetland that will enable this property to be used for facilitated access.

Land Stewardship: Williams and Shrike Prairies



ENHANCEMENT PLANS IMPLEMENTED

at Williams Prairie and Shrike Prairie, two of CPC's showcase prairies. These plans will preserve biodiversity and ensure year-round public access from dawn to dusk.



MAINTAINED PUBLIC WALKING TRAILS

with the help of volunteers who completed mowing, native plant care & plantings, and invasive removal.



NATIVE PLANT DIVERSITY INCREASED WITH

a new planting plan for Shrike Prairie, generously created and donated by landscape architect Tyler Swanson.



ENCOURAGED PUBLIC USE OF THE WALKING TRAIL

at Williams Prairie with new signage that is visible from the road.

Land Stewardship: Warren Ranch



RANCHLANDS PROGRAM MANAGER ALEX DIMAGGIO

expanded her stewardship role and began working on projects across the Katy Prairie Preserve.



INCREASED PRODUCTIVITY

and enhanced the marketing of Warren Ranch cattle with improved management and grazing practices.



BEGAN A 3200-ACRE RESTORATION PROJECT

that includes invasives species management and a prescribed burn.



STRENGTHENED OPERATIONS

while building on existing conservation efforts by continuing to participate in the NRCS Conservation Stewardship Program.

COMMUNITY RESILIENCE & ADVOCACY



Community Resilience & Advocacy



ADVOCATED FOR CENTENNIAL PARKS CONSERVATION FUND

which passed with a 74% positive vote. This \$1 billion fund will help secure new parks for future generations of Texans.



PARTICIPATED IN NATIONAL ISSUES

as a representative of the Land Trust Alliance's Energy and Climate & Farm Working Groups. Both follow national legislation affecting conservation and land trusts.



SUPPORTED LOCAL PARKS AND CONSERVATION

as a co-host of the Green Mayoral Candidate Forum along with a number of local parks and conservation organizations.



HELPED PROPOSE A PLAN TO REDUCE FLOOD RISK

for Houston's westside and downstream of Addicks and Barker reservoirs. The Buffalo Bayou Community Plan will add and restore natural lands in combination with other elements of flood risk reduction.

COMMUNITY CONSERVATION & RESEARCH



Community Conservation



COMMENCED FIELD OFFICE RENOVATIONS

that will add a classroom, public restrooms, a stewardship barn, and more to enhance visitor amenities and increase educational programming.



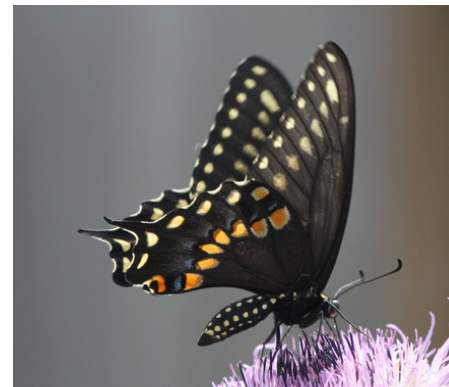
COMPLETED DESIGN FOR A NEW BIRD BLIND

that will allow all to observe and enjoy wildlife. This 250-square foot blind will be open in 2024.



INCREASED CONTRIBUTIONS TO CITIZEN SCIENCE

with the installation of a new weather station at Indiangrass Preserve.



ENGAGED HOUSTON-AREA STUDENTS

as the host of “Prairie Pollinators” - a Virtually Wild program in partnership with USFW.

Community Conservation



ENGAGING NEW COMMUNITIES

in education and stewardship with the Galveston Bay Estuary Program outreach grant. Community groups such as Outdoor Afro and Latino Outdoors hosted events at Indiangrass Preserve to provide members with unique opportunities to access the outdoors.



HOSTED NEARLY 2000 VOLUNTEERS

in stewardship and outreach programs that helped CPC complete important work we could not accomplish alone.

**Prairie
Education
Loaner
Trunk**



RELAUNCHED THE PRAIRIE EDUCATION TRUNK PROGRAM

and participated in the 2nd Annual Teacher Workshop for KISD Challenge Teachers.



ADVENTURE FOR ALL

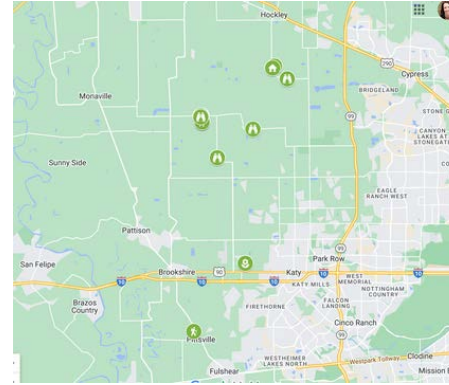
awaits on two new walking trails created for the public. The Hebert Reservoir trail and the South Trail at Indiangrass Preserve are now open, adding to the Ann Hamilton Trail at the Indiangrass Preserve and a walking trail at Williams Prairie.

Community Conservation



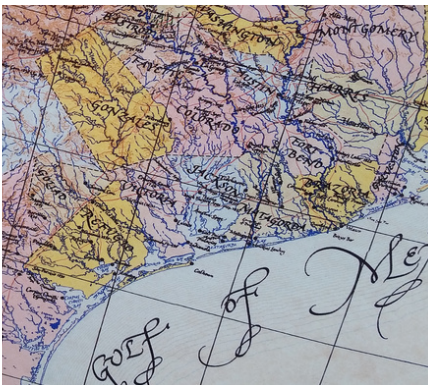
EXPANDED THE GREAT GROW OUT

program, providing hands-on training along with seed, soil, and germination trays for each volunteer, removing barriers to entry for this community engagement program.



BROADENED SELF-GUIDED TOUR RESOURCES

with a trail map of the Katy Prairie Preserve accessible on a phone, creating an interactive experience the public can use to explore visitor amenities.



LEARNED MORE ABOUT INDIGENOUS COMMUNITIES

as we inaugurated a search with the Houston Archeological Society for one of the last known encampments of the Akokisa people on the Katy Prairie.



BETHANY FOSHEE PROMOTED

to Stewardship and Outreach Director. She oversees volunteer and educational programs as well as land stewardship activities on CPC's conserved lands.

Research



THE EFFECT OF FIRE REGIMES ON PRAIRIE GRASSES & FORBS

on the Katy Prairie Preserve is being studied by a University of Houston Ph.D. student.



MOSQUITO TRAPPING

Biologists with the Harris County Public Health Mosquito and Vector Control partnered with CPC in 2023 to test native birds and arthropod species on the Katy Prairie as part of their disease surveillance work.



GPS STATIONS INSTALLED AT INDIANGRASS PRESERVE

as part of a study with the University of Houston to collect data on land movement, subsidence, and uplifting.



CONSERVATION INNOVATION GRANT

awarded to CPC by NRCS to create a methodology with Texas A&M that will detect invasive species early on using aerial imagery and artificial intelligence.

FUNDRAISING & EVENTS



Fundraising & Events



RAISED \$275,000 IN TEN WEEKS

thanks to generous donors. These gifts matched a challenge grant to finish a land conservation project on the Katy Prairie Preserve that provides critical habitat for migratory birds.



RAISED \$300,000 FOR CONSERVATION

at the 2023 Bash, Storied Landscapes, honoring Bill Stransky and chaired by Cris and Creighton Smith.



Your Gift Matters

Make a Big Impact With a Future Gift

When you include the Coastal Prairie Conservancy in your estate plan, your generosity preserves coastal prairies, wetlands, farms, and ranches to benefit people and wildlife forever. Thank you for ensuring that CPC can impact those we serve well into the future.

WORKED TO ENSURE A LONG-TERM SOURCE OF CONSERVATION FUNDING

with a new planned giving website.



GENEROUS GIVING FROM INDIVIDUALS, CORPORATIONS, AND FOUNDATIONS

supported the preservation and enhancement of coastal prairie, public outreach, and community resiliency.

Thank you!

TO THE INDIVIDUALS,
FOUNDATIONS,
ORGANIZATIONS, AND
CORPORATIONS WHO
GENEROUSLY CONTRIBUTED
THIS YEAR

Baker Hughes
Foundation



ConocoPhillips



HALLIBURTON
CHARITABLE FOUNDATION

CenterPoint
Energy



MUSTANG
CAT

TC Energy
Foundation



BOSCH
Invented for life



THE GRAND
PRAIRIE
CREATE YOUR BEST LIFE



Orsted



UNION PACIFIC
FOUNDATION

Williams

CW HENDERSON
ELECTRIC



RICE
TEXAS RICE INDUSTRY
COALITION FOR
THE ENVIRONMENT

chameleon
LIKE INC.



PUFFER

OUTDOOR FUND



Cabela's

eog resources

CLARK CONDON



SunBody Hats
Houston, Texas www.sunbody.com

PayPal
Giving Fund



chevron humankind

MURPHY
OIL CORPORATION



H-E-B

res

Akin Gump
STRAUSS HAUER & FELD LLP

amazon
smile

Hewlett Packard
Enterprise
Foundation

Abbott



TANCIG
LAW

Honeywell



TEXAS
INSTRUMENTS
FOUNDATION

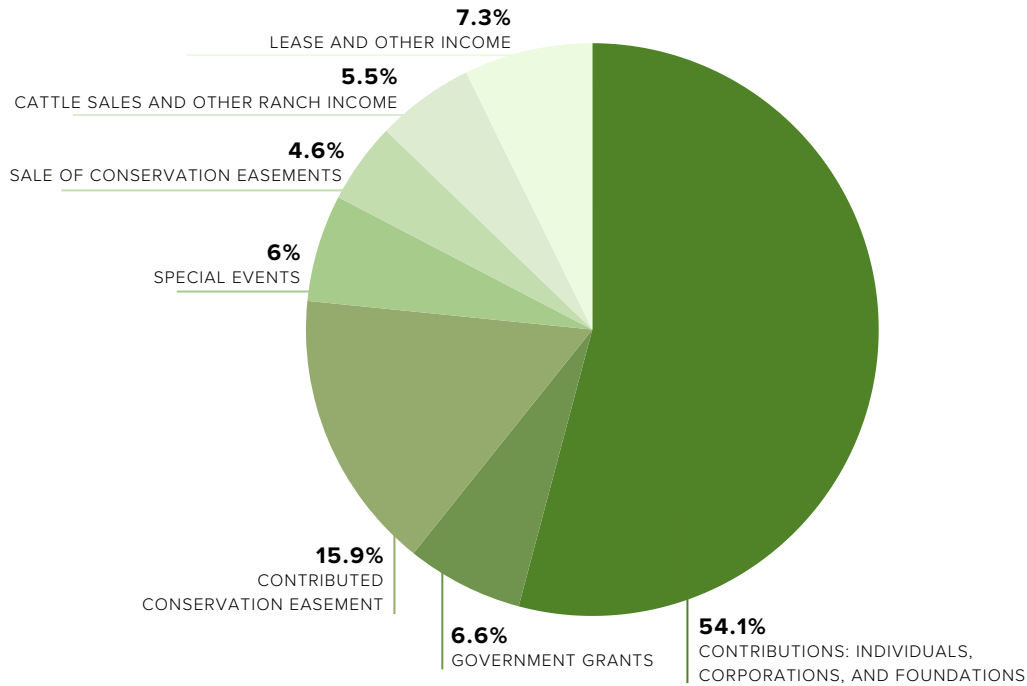


Owens Scientific, Inc.
CRYSTAL & ELECTRONIC PRODUCTS

2022 Audited Financials*

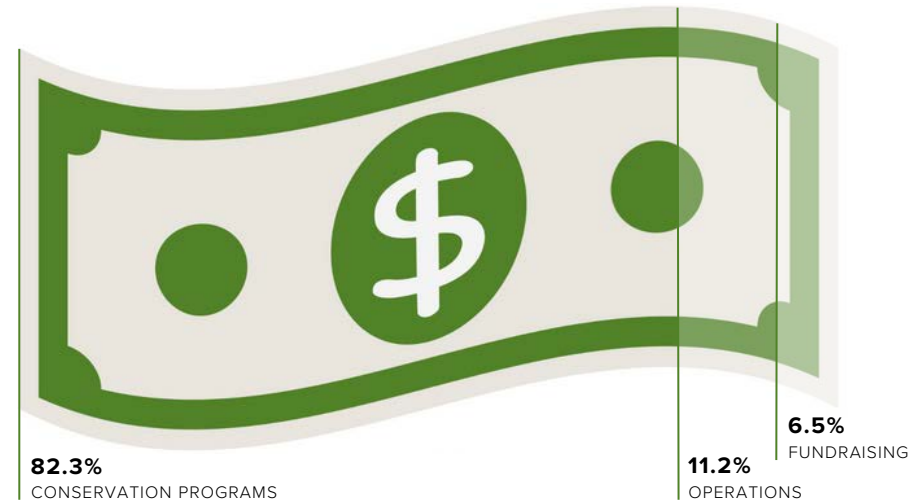
Revenue

TOTAL: \$3,832,563




Expenses

TOTAL: \$2,625,630



*MINUS COST OF DIRECT DONOR BENEFITS AND NET INVESTMENT RETURNS



2023 Photographs and illustrations generously provided by: Kathy Adams Clark, Tom Dubrock, Chuck Duplant, Steve Gast, T. Kibodeaux, Alisa Kline, Greg Lavaty, Toby Lee, Susie Marten, Amy Miller, Michael Morton, Don Pine, Rachel Rommel, Karen Sachar, Paul Stirling, Tyler Swanson, and Cass Turner.