

2022
STATE
OF THE
PRAIRIE



**OUR NEW NAME, COASTAL PRAIRIE
CONSERVANCY, REFLECTS THE EXPANSION
OF OUR MISSION. THE SUCCESS OF OUR
ENDEAVORS DURING THE PAST 30 YEARS
MEANS WE'VE GREATLY EXPANDED THE AREA
THAT WE NOW PRESERVE FOR TEXANS.
BETWEEN OUR ACQUISITIONS AND OUR
PARTNERSHIPS, WE STRETCH FROM THE
HISTORIC KATY PRAIRIE TO THE GULF COAST.**

- MARY ANNE PIACENTINI, PRESIDENT AND CHIEF EXECUTIVE OFFICER

LAND CONSERVATION



Land Conservation



CONSERVED 552 ACRES

with a conservation easement on a Jackson County ranch that will protect vital wetlands, grasslands, and animal habitat on the banks of the Lavaca River.



PARTICIPATED IN LTA ADVOCACY DAYS

to visit with congressional staff to encourage support for the Recovering America's Wildlife Act, Conservation Easement Integrity Act, and the Farm Bill. These efforts will promote healthy watersheds and enhance conserved lands.



ORGANIZED THE TEXAS COASTAL PRAIRIE CONFERENCE

to bring landowners and conservation partners together to discuss the preservation of wide-open spaces in Texas.



PUBLICIZED THE GAINING GROUND CAMPAIGN

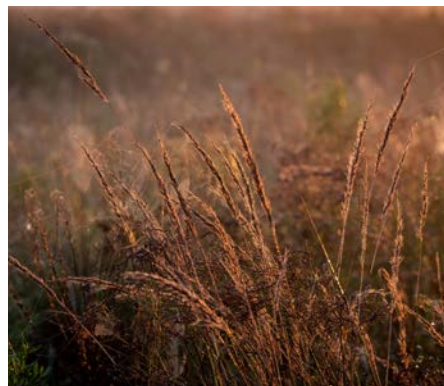
highlighting the work being done in our region to conserve land, strengthen communities, and create a healthier planet.

Land Conservation



TEXAS GENERAL LAND OFFICE (GLO)

selected the Texas Coastal Prairie Initiative as a Tier 1 priority for the 2023 Texas Coastal Resiliency Master Plan. HGAC's Regional Conservation Initiative also selected two CPC projects as Priority One projects.



AQUIRED 8.7 ACRES

on the Katy Prairie Preserve, protecting additional land adjacent to protected properties just south of Cypress Creek.



SECURED A \$2MM NAWCA GRANT

to fund the conservation of coastal prairie in CPC's expanded regional focus area.



JOINED WITH LANDOWNERS

across the region to discuss future conservation projects and the permanent protection of their farms and ranches.

LAND STEWARDSHIP



Land Stewardship



INVASIVE SPECIES MANAGEMENT

continued on the Katy Prairie Preserve. Overseen by the CPC stewardship staff, this effort was aided by volunteers, the Texas Conservation Crew, and Wildlife Habitat Federation.



DISCOVERED THE PINK SUNDEW

on the Katy Prairie Preserve, a rare, carnivorous plant.



OPENED WILLIAMS PRAIRIE TO THE PUBLIC

and continued management of invasive plants to encourage regrowth of the native seed bank, so all can enjoy this 11-acre remnant prairie.



PLANTED 300 NATIVE GRASSES & WILDFLOWERS

at the showcase Shrike Prairie at Warren Lake and removed eastern gamagrass that is now being utilized at larger restoration projects across Houston.

Land Stewardship



EXPANDED THE GREAT GROW OUT

program, continued seed collecting, and improved the infrastructure of the Native Seed Nursery.



WETLANDS DISCING

took place at the Indiangrass Preserve to encourage plant diversity and benefit our migratory waterfowl.



TIMELY ANNUAL MONITORING

was completed for all CPC protected properties and management plans were updated for all fee-owned properties.



A TRAIL MAINTENANCE PROGRAM

led entirely by volunteers was established at Indiangrass Preserve.

COMMUNITY RESILIENCE



Community Resilience



BUFFALO BAYOU COMMUNITY PLAN

work continued with Houston Stronger to promote opportunities to use nature-based solutions and innovative engineering to reduce flood risk. Many of CPC's Flood Risk Reduction Strategies were incorporated into the BBCP.



COALITION FOR ENVIRONMENT, EQUITY, AND RESILIENCE (CEER)

advocated for more community participation in flood planning at the local, county, and state levels. Mary Anne Piacentini serves on CEER's steering committee.



THE 2050 FLOOD RESILIENCE PLAN

process was started; CPC served on the Harris County Community Flood Resilience Task Force and the Harris County's Interagency Review Team to develop a flood risk plan for 2050 and beyond.



A REGIONAL FLOOD PLAN

for the San Jacinto Watershed was developed through the Texas Water Development Board; CPC's participation on the Regional Flood Planning Group advocated for the conservation of farms, ranches, and natural spaces.

COMMUNITY CONSERVATION & RESEARCH

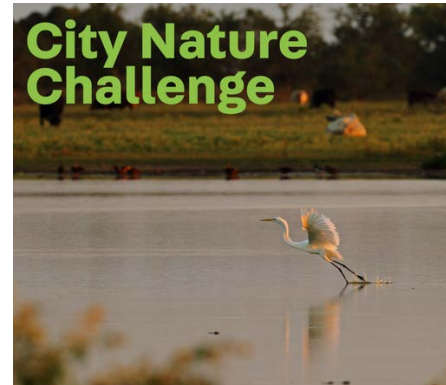


Community Conservation



NEW TRAILHEAD VISITOR CENTER

at the Indiangrass Preserve was constructed by volunteers. The new amenity orients visitors and provides staff and volunteers with a space to welcome groups and tours.



CITY NATURE CHALLENGE EVENTS

were hosted by CPC at the Indiangrass Preserve, Williams Prairie, and Shrike Prairie to support the Houston-Galveston team and monitor regional biodiversity.



OPENED TWO NEW WALKING TRAILS

on CPC preserves. One is a 1.5 mile natural surface trail at Indiangrass Preserve and the other is a ½ mile trail at the newly opened and restored Williams Prairie Preserve.



PARTNERED WITH NEW COMMUNITY GROUPS

to better serve all communities surrounding CPC's preserves. Collaboration with groups like OutdoorAfro helped expand access to nature and will continue to inform future partnerships.

Community Conservation



OUTREACH AND EDUCATIONAL PROGRAMS

such as *Unplugged Adventures* were offered through the year on topics like waterfowl migration, birding the Katy Prairie, planting for pollinators, mindfulness in nature, stargazing, and foraging.



GREAT TEXAS BIRDING CLASSIC

grant was received to construct a bird blind at the Indiangrass Preserve wetland. Our goal is to have the blind constructed in time for spring migration in 2023, and the project will include plantings of key native species for migratory waterfowl.



VIEWING PLATFORM AND ANN HAMILTON TRAIL

remained open to the public throughout the year, providing access for all to enjoy the breathtaking beauty of the coastal prairie landscape.



PUTTING DOWN ROOTS

brought volunteers to the Indiangrass Preserve, who successfully planted over 1,100 native plants. We thank those who attended for making this year's event one of the most productive in CPC history.

Volunteers



PRESERVE STEWARD VOLUNTEERS

maintained trails, monitored species diversity, and worked tirelessly to restore prairie habitats. They established a new pollinator garden along the Ann Hamilton Trail and nurtured and supervised the planting of over 1,000 native grasses and wildflowers.



STEWARDSHIP SATURDAYS

were held each month throughout 2022. Volunteers of all ages joined in prairie restoration and trail work at the Indiangrass Preserve. This weekend volunteer opportunity was expanded to occasionally include the Williams Prairie.



THE GREAT GROW OUT PROGRAM

allowed volunteers at home to continue to aid in restoration work using locally collected seed to grow native plants from the safety of home.



CORPORATE VOLUNTEER DAYS

brought our corporate partners to the prairie to support CPC's conservation staff with team building volunteer opportunities such as seed collecting, planting native plants, and invasive species removal.

Research



WESTERN CHICKEN TURTLE STUDY

continued with Texas A&M University and University of Houston Clear Lake identifying the Katy Prairie as a key habitat for this species.



SPOTTED SKUNK STUDY

moved forward with Texas Tech and Angelo State University to track the presence of this species on the Katy Prairie Preserve.



BAYLOR RESEARCHERS

began a population monitoring study of the Gulf Coast tick.

FUNDRAISING & EVENTS



Fundraising & Events



DONOR RETENTION AT 60%

marks a 7% increase in two years, an extraordinary reflection of CPC's commitment to stewarding long-time supporters and creating opportunities for new supporters to join our mission.



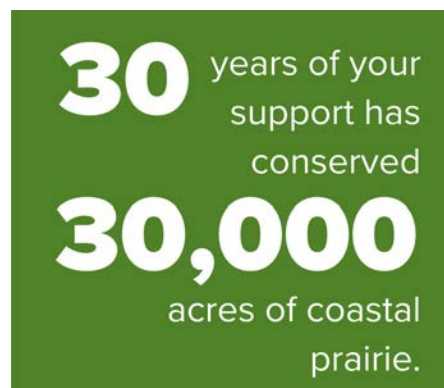
HERE WE GROW AGAIN BASH

marked a successful return to in-person fundraising events. The event honored ConocoPhillips and raised over \$250,000 to help preserve and restore our coastal prairie lands.




REBRANDED TO CPC

to better capture the growth of our mission. Coastal Prairie signifies the broader, regional reach of the organization, which remains committed to land conservation and stewardship.



THE 2022 ANNUAL APPEAL

encouraged our supporters to make a gift and thanked them for making 30 years and 30,000 acres of progress possible.



**THANK YOU
TO OUR
GENEROUS
DONORS WHO
MAKE THIS
WORK
POSSIBLE**

THANK YOU TO OUR GENEROUS CORPORATE PARTNERS

HALLIBURTON
CHARITABLE FOUNDATION

Baker Hughes
Foundation



OUTDOOR FUND



ConocoPhillips

MUSTANG



TC Energy
Foundation



sunday



PACKED
by chameleon like, inc.



RANGER
OIL CORPORATION

DANIELA
WERNECK



**NORTON ROSE
FULBRIGHT**

EMERSON



**TEXAS
INSTRUMENTS
FOUNDATION**



**UNION PACIFIC
FOUNDATION**

BRIDGELAND

HCA Healthcare
FOUNDATION

Zimmerman
Resources Company

Honeywell

CLARK CONDON

Columbia
Sportswear Company



Relativity



PayPal
Giving Fund



Albertsons
SAFEWAY

Hewlett Packard
Enterprise
Foundation

BOARD OF DIRECTORS

Darryl Anderson, Chairman
Paige Navarro, Vice Chairman
Sam Hix, Treasurer
Iris Poteet, Secretary

Foster Carter
Michael Huffmaster
Jessica Jubin
Juliana Spinola
Forest Wylie



ADVISORY BOARD

William J. Anderson, Jr.
Kevin Bartol
Geoffrey Castro
Fred Collins
Stephen E. Gast
Jim Gregory
Ann Hamilton
Chris Harris
Lynn Henson
John Jacob, Ph.D.
J. Tynan Kelly
Thomas R. Kelsey
Mark Klein
Caroline (Carrie) Masiello
Hardy Murchison
Chris Patton
Lynn Paulsen
David Poteet
Kathy Reiser
Fred Smeins
Carter Smith
William T. Snypes
Roger Soape
Maryann Young

Photographs generously provided by: Pat Conner, Tom Dubrock, Chuck Duplant, Carolyn Fannon, Frank Farese, Steve Gast, Jaime González, T. Kibodeaux, Greg Lavaty, Michael Morton, Don Pine, Ashley Unbehagen, Mac Womack

