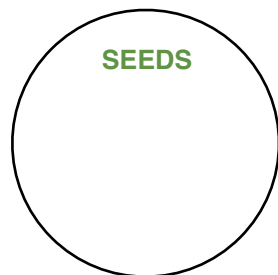


# Indian Blanket



Greg Lavaty

*Indian Blanket*  
*Gaillardia pulchella*



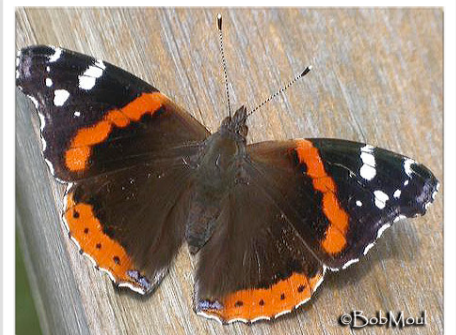
## ABOUT INDIAN BLANKET

Firewheel or indian blanket is a popular annual growing 1-2 ft. tall. The hairy stem is usually much-branched and becomes woody at the base late in the season. Branched stems, mostly leafy near the base, have showy flower heads with rays red at base, tipped with yellow, each with 3 teeth at broad end. The well-known flower heads are 1-2 in. across with a red center and a yellow outer band. Occasionally the three-cleft rays are solid orange or yellow. The disk flowers in the center are brownish red.

*-Description from Lady Bird Johnson Wildflower Center*

## WILDLIFE USES:

Colorful native flower or cultivated garden variety. Easy to grow. No special needs. Nectar plant for clouded sulphur and red admiral butterflies.



*Red Admiral Butterfly*  
*Vanessa atalanta*